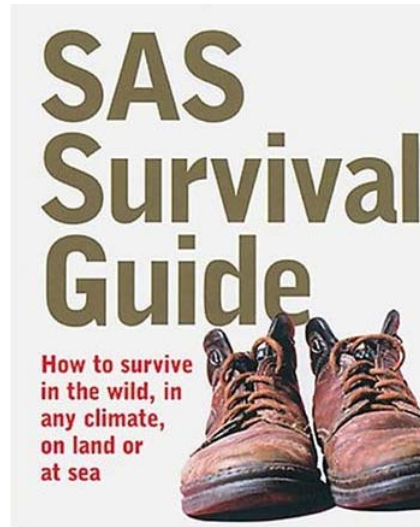


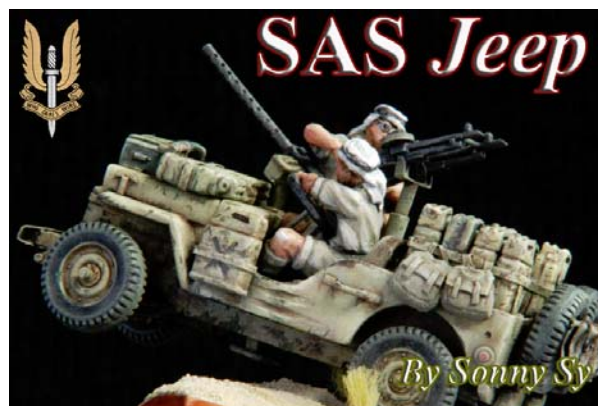
SAS Enterprise Guide at 7th Annual SAS® Summer Institute

Yelena Perkhounkova
College of Nursing
SAS® User Group
University of Iowa
19 August 2015



SAS Enterprise Guide is a point-and-click graphical interface to SAS.

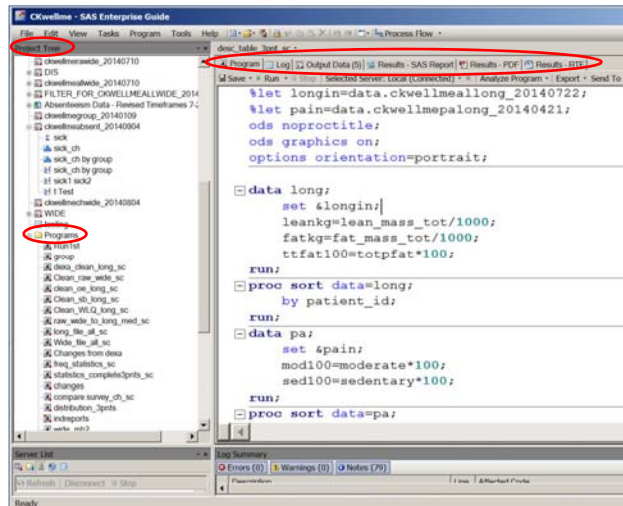
Easy access to data
Ready-to-use *tasks*
Programming interface
Organizational structure



SAS EG provides a convenient way to organize projects.

EG project shows references to data, tasks, and programs in project tree.

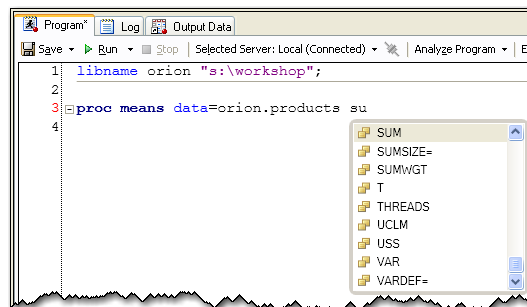
The program, log, output data, and results are available via tabs in the main pane.



3

SAS EG Program Editor provides convenient tools for writing code.

Autocomplete
Dynamic syntax tooltips
Formatting programs
Analyzing program flow

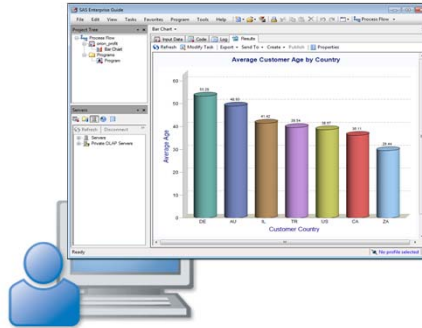


Note: you can do a lot of different analyses in SAS EG without writing a single line of code (if your data are clean and set up for analysis)

4

Ways to access SAS EG

Virtual Desktop (5.1)
SAS installed on our PC (6.1)



5

Additional information to get you started

<http://support.sas.com/documentation/onlinedoc/guide/tut51/en/>
<http://support.sas.com/eguide>



6

Free SAS e-learning courses are available for UI students, faculty and staff on <http://support.sas.com/myelearn>

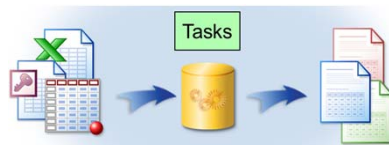
- [Creating Reports and Graphs with SAS\(R\) Enterprise Guide\(R\) \(EG 6.1\)](#)
- [Creating Reports and Graphs with SAS\(R\) Enterprise Guide\(R\) \(EG 7.1\)](#)
- [Introduction to Statistical Concepts \(released 2013; retiring 01SEP2015\)](#)
- [Predictive Modeling Using Logistic Regression](#)
- [SAS Programming 3: Advanced Techniques and Efficiencies \(released 2015\)](#)
- [SAS\(R\) Enterprise Guide\(R\) 1: Querying and Reporting \(EG 5.1\)](#)
- [SAS\(R\) Enterprise Guide\(R\) 1: Querying and Reporting \(EG 7.1\)](#)
- [SAS\(R\) Enterprise Guide\(R\) 2: Advanced Tasks and Querying \(EG 5.1\)](#)
- [SAS\(R\) Enterprise Guide\(R\) 2: Advanced Tasks and Querying \(EG 7.1\)](#)
- [SAS\(R\) Enterprise Guide\(R\): ANOVA, Regression, and Logistic Regression](#)
- [SAS\(R\) Programming 1: Essentials \(released 2009; retiring 01SEP2015\)](#)
- [SAS\(R\) Programming 2: Data Manipulation Techniques \(released 2009; retiring 01SEP2015\)](#)
- [SAS\(R\) Programming 3: Advanced Techniques and Efficiencies \(released 2009; retiring 01SEP2015\)](#)
- [Statistics 1: Introduction to ANOVA, Regression, and Logistic Regression \(released 2015\)](#)

7

I will show today how to use SAS EG for research projects.

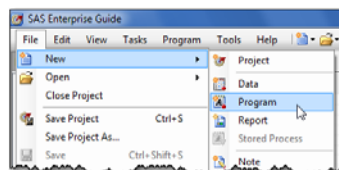


Creating and saving projects



Using SAS EG tasks to

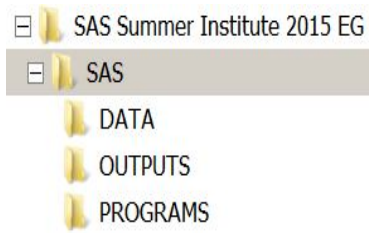
- Import/export SAS data
- Create subsets of data
- Summarize data
- Plot data
- Run simple statistical analysis



Adding programs to the projects

8

Start by creating convenient folder structure on H-Drive.



Open a new SAS EG project